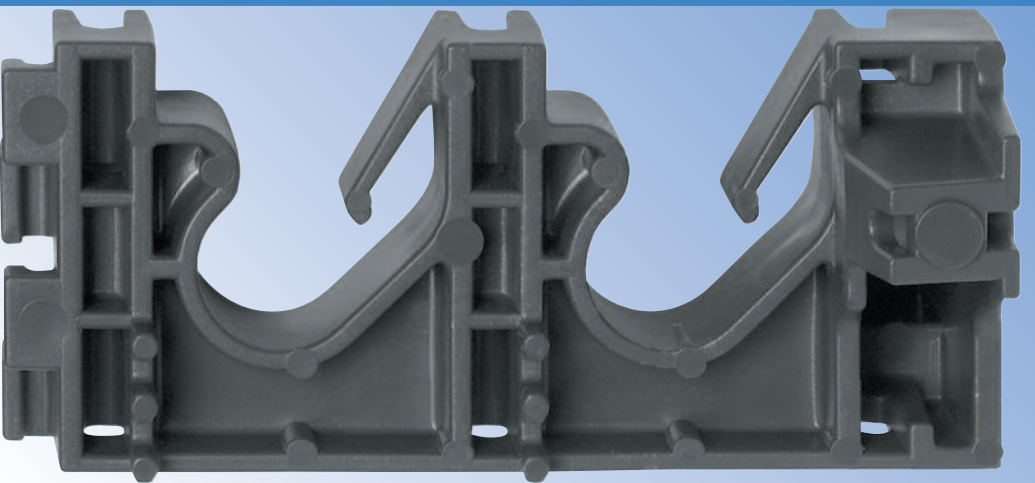


VERSA-LINK™



A **Versatile** Clamping System

Product Number	Size	Description	U.P.C. Code	Carton Qty.	Carton Weight
33680	1/2"	Two-Pipe Clamps with Nails (20 in a polybag)	038753-336800	10 Bags	18
33681	1/2"	Two-Pipe Clamps with Screws (20 in a polybag)	038753-336817	10 Bags	18
33682	1/2"	One-Pipe Clamps (10 in a polybag)	038753-336824	10 Bags	5

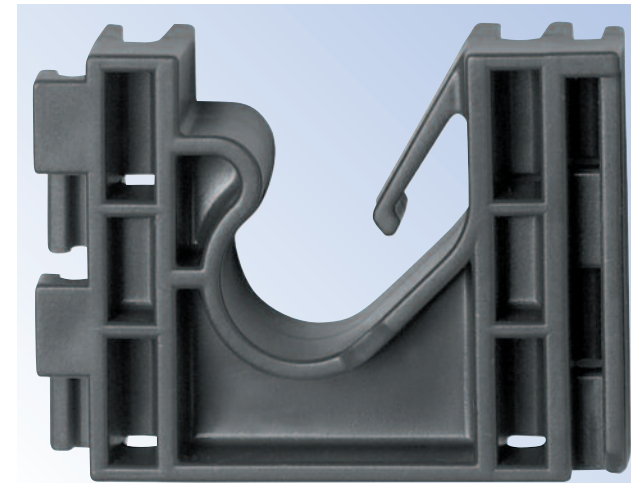
Oatey Versa-Link™ Clamps are the newest addition to Oatey's extensive line of Pipe Support Products. Our clamps are manufactured with the highest quality materials and are designed to be fast and easy to install. We have versatile options for every application. Visit www.oatey.com for more information.

Pipe Clamps with Nails
Suspension Clamps
Insulating Pipe Clamps
Standard Pipe Clamps
Metal Stud Insulating Pipe Clamps
Holdrite® Brackets
Flat Tube Nailers
Copper Tube Straps
Copper and Steel Pipe Hooks



DUV J-Hooks®
CTS J-Hooks®
Cable, Conduit and Duct Ties
Stud Guards and FHA Plates
Metal and Plastic Hanger Strap
Tab Tape
Hyco Bars
Bell Hangers
Milford Hangers

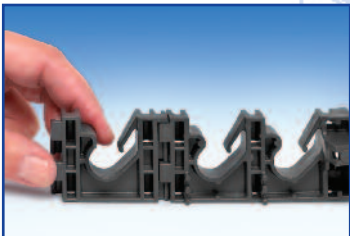
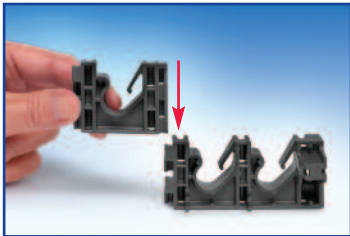
Oatey®



Versatile Clamping System

Introducing a new versatile modular clamping system! The Oatey Versa-Link™ was created for simple, rapid installation of all types of pipe, with a modular design that allows for quick connections to meet a variety of unique plumbing applications.

Flexible and strong, Versa-Link™ offers all the features and benefits needed for modern pipe support designs with the quality and dependability Oatey is known for in the industry.



Versatile Applications

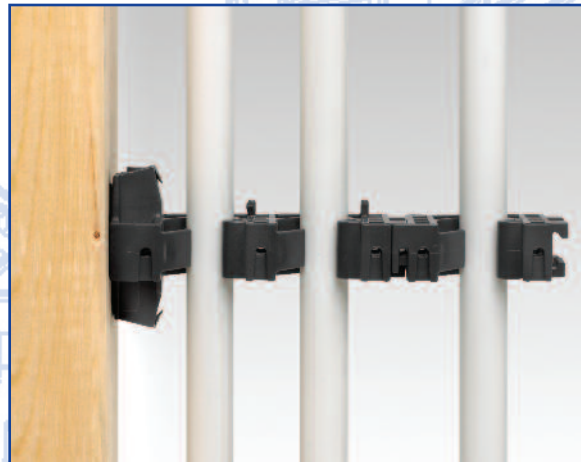
The Versa-Link™ positions pipe lines in the center of the stud, avoiding the chance of puncturing or damage during finishing.

Positioning the pipe in the center of the studs helps to minimize sound by eliminating the pipe rattling on the stud walls.

There is no need for supplemental materials such as 2 x 4 blocks or strapping when securing the clamps to stud walls.

Versa-Link™ helps to secure and organize runs, arranging the pipe for a professional appearance.

Three-Pipe



Versatile Options

The Oatey Versa-Link™ clamp is designed for use with all types of PEX, CPVC and copper pipe.

Clamps can be connected in a pattern that is ideal for use in confined PEX manifold applications.

Easily mounted to support vertical or horizontal runs in metal or wood stud walls for flexible usage options.

Copper Pipe



CPVC Pipe

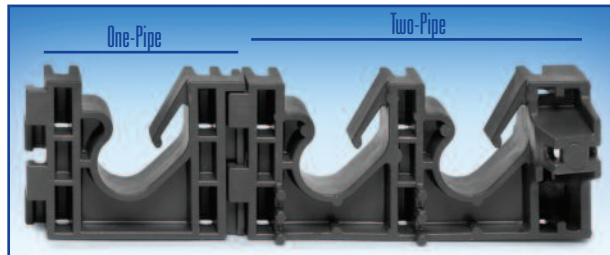


PEX Pipe



One-Pipe

Two-Pipe



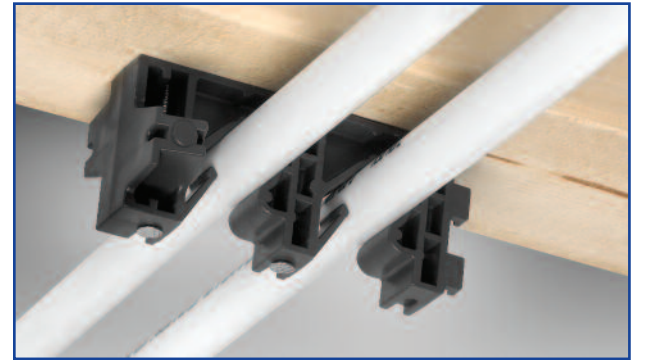
Versatile Support

Two-Pipe Clamp created to securely support hot and cold lines.

Pre-loaded with nails or drill point sheet metal screws for simple, rapid installation in both wood and metal studs.

Made of high impact ABS, the clamps withstand vigorous installation conditions.

Horizontal



With Nails



With Screws

