

Product No. Size Description

Ctn. Qty.



UNDERGROUND PNEUMATIC PLUGS

SINGLE-SIZE TEST-BALL® PLUGS

| | | |
|---------|-----|-----------------|
| 041 386 | 8" | Test-Ball® Plug |
| 041 394 | 10" | Test-Ball® Plug |
| 041 408 | 12" | Test-Ball® Plug |



MULTI-SIZE TEST-BALL® PLUGS

| | | |
|---------|-----------|-----------------|
| 275 048 | 4" - 6" | Test-Ball® Plug |
| 275 058 | 6" - 8" | Test-Ball® Plug |
| 275 088 | 8" - 12" | Test-Ball® Plug |
| 275 128 | 12" - 18" | Test-Ball® Plug |

SINGLE-SIZE MUNI-BALL® PLUGS

| | | |
|---------|---------|-----------------|
| 262 008 | 1-1/2" | Muni-Ball® Plug |
| 262 010 | 2" | Muni-Ball® Plug |
| 262 021 | 3" | Muni-Ball® Plug |
| 262 048 | 4" | Muni-Ball® Plug |
| 262 064 | 6" | Muni-Ball® Plug |
| 262 080 | 8" | Muni-Ball® Plug |
| 262 110 | 10" | Muni-Ball® Plug |
| 262 129 | 12" | Muni-Ball® Plug |
| 262 137 | 15"-16" | Muni-Ball® Plug |
| 262 188 | 18" | Muni-Ball® Plug |
| 262 218 | 21" | Muni-Ball® Plug |
| 262 242 | 24" | Muni-Ball® Plug |



MULTI-SIZE MUNI-BALL® PLUGS

| | | |
|---------|-----------|-----------------|
| 265 048 | 4" - 6" | Muni-Ball® Plug |
| 265 068 | 6" - 8" | Muni-Ball® Plug |
| 265 078 | 8" - 10" | Muni-Ball® Plug |
| 265 098 | 8" - 12" | Muni-Ball® Plug |
| 265 128 | 12" - 18" | Muni-Ball® Plug |



REMO® REMOTE PLACEMENT PLUGS

| | | |
|---------|-------------|--------------------------------------|
| 275 328 | 6" - 10" | Remo® Plug |
| 275 336 | 8" - 12" | Remo® Plug |
| 275 448 | 12" - 18" | Remo® Plug |
| 019 473 | | Remo® Pole - 6' Length |
| 019 458 | | Remo® Pole Adapter (1-1/4" Male NPT) |
| 019 558 | 1-1/2" | Remo® Muni-Ball® By-pass Adapter |
| 019 568 | 2" | Remo® Muni-Ball® By-pass Adapter |
| 019 548 | 2" - 1-1/2" | Reducer Bushing |
| 060 508 | 3" - 2" | Reducer Bushing |



I-SERIES™ MULTI-SIZE TEST-BALL® PLUGS

| | | |
|---------|-----------|------------------------------------|
| 395 088 | 4" - 8" | Multi-Size Test-Ball® Plug |
| 395 168 | 8" - 16" | Multi-Size Test-Ball® Plug |
| 395 248 | 12" - 24" | Multi-Size Test-Ball® Plug |
| 375 488 | 24" - 48" | Multi-Size Test-Ball® Plug |
| 375 608 | 30" - 60" | Multi-Size Test Ball® Plug |
| 375 728 | 48" - 72" | Multi-Size Test-Ball® Plug |
| 375 968 | 54" - 96" | Multi-Size Test-Ball® Plug |
| 385 168 | 8" - 16" | Multi-Size Test-Ball® Plug (Short) |
| 385 248 | 12" - 24" | Multi-Size Test-Ball® Plug (Short) |



Category 13 cherne Underground

13



| Product No. | Size | Description | Ctn. Qty. |
|-------------|------|-------------|-----------|
|-------------|------|-------------|-----------|

I-SERIES™ MUNI-BALL® PLUGS



| | | |
|---------|-----------|----------------------------|
| 355 088 | 4" - 8" | Multi-Size Muni-Ball® Plug |
| 355 168 | 8" - 16" | Multi-Size Muni-Ball® Plug |
| 355 248 | 12" - 24" | Multi-Size Muni-Ball® Plug |
| 355 488 | 24" - 48" | Multi-Size Muni-Ball® Plug |
| 365 608 | 30" - 60" | Multi-Size Muni-Ball® Plug |
| 365 728 | 48" - 72" | Multi-Size Muni-Ball® Plug |
| 365 968 | 54" - 96" | Multi-Size Muni-Ball® Plug |

LARGE MULTI-SIZE MUNI-BALL® PLUGS WITH NEW RUPTURE DISC



| | | |
|---------|-----------|--|
| 402 308 | 15" - 30" | Multi-Size Muni-Ball® Plug w/ 2-1/2" NPT |
| 404 308 | 15" - 30" | Multi-Size Muni-Ball® Plug w/ 4" NPT |
| 404 428 | 24" - 42" | Multi-Size Muni-Ball® Plug |
| 404 608 | 40" - 60" | Multi-Size Muni-Ball® Plug |

LARGE MULTI-SIZE TEST-BALL® PLUGS WITH NEW RUPTURE DISC

| | | |
|---------|-----------|----------------------------|
| 400 308 | 15" - 30" | Multi-Size Test-Ball® Plug |
| 400 428 | 24" - 42" | Multi-Size Test-Ball® Plug |
| 400 608 | 40" - 60" | Multi-Size Test-Ball® Plug |

PROTECTIVE SLEEVES



| | | |
|---------|-----------|-------------------|
| 300 998 | 15" - 30" | Protective Sleeve |
| 301 018 | 24" - 42" | Protective Sleeve |
| 301 028 | 24" - 48" | Protective Sleeve |
| 301 058 | 30" - 60" | Protective Sleeve |
| 301 038 | 40" - 60" | Protective Sleeve |
| 301 048 | 48" - 72" | Protective Sleeve |

THE "ORIGINAL" BIG-MOUTH® PLUGS



| | | |
|---------|-----------|-----------------|
| 269 008 | 8" - 10" | Big-Mouth® Plug |
| 269 018 | 10" - 12" | Big-Mouth® Plug |
| 269 028 | 12" - 15" | Big-Mouth® Plug |

SINGLE-SIZE BIG-MOUTH® PLUGS



| | | |
|---------|-----|-----------------|
| 369 068 | 6" | Big-Mouth® Plug |
| 369 088 | 8" | Big-Mouth® Plug |
| 369 108 | 10" | Big-Mouth® Plug |
| 369 128 | 12" | Big-Mouth® Plug |
| 369 158 | 15" | Big-Mouth® Plug |
| 369 188 | 18" | Big-Mouth® Plug |
| 369 218 | 21" | Big-Mouth® Plug |
| 369 248 | 24" | Big-Mouth® Plug |

Product
No.

Size

Description

Ctn.
Qty.

MULTI-SIZE BIG-MOUTH® PLUGS

| | | |
|---------|-----------|----------------------------|
| 374 068 | 6" - 10" | Big-Mouth® Plug w/ 4" NPT |
| 374 088 | 8" - 12" | Big-Mouth® Plug w/ 4" NPT |
| 376 088 | 8" - 12" | Big-Mouth® Plug w/ 6" NPT |
| 376 128 | 12" - 18" | Big-Mouth® Plug w/ 6" NPT |
| 378 128 | 12" - 18" | Big-Mouth® Plug w/ 8" NPT |
| 376 148 | 14" - 21" | Big-Mouth® Plug w/ 6" NPT |
| 378 148 | 14" - 21" | Big-Mouth® Plug w/ 8" NPT |
| 380 148 | 14" - 21" | Big-Mouth® Plug w/ 10" NPT |
| 376 188 | 18" - 24" | Big-Mouth® Plug w/ 6" NPT |
| 378 188 | 18" - 24" | Big-Mouth® Plug w/ 8" NPT |
| 380 188 | 18" - 24" | Big-Mouth® Plug w/ 10" NPT |
| 376 248 | 24" - 36" | Big-Mouth® Plug w/ 6" NPT |
| 378 248 | 24" - 36" | Big-Mouth® Plug w/ 8" NPT |
| 380 248 | 24" - 36" | Big-Mouth® Plug w/ 10" NPT |



MULTI-SIZE BIG-MOUTH® PLUG FLANGE KITS

| | | |
|---------|-----|--------------------------|
| 049 068 | 6" | Flange Kit for 14" - 21" |
| 049 088 | 8" | Flange Kit for 14" - 21" |
| 049 168 | 6" | Flange Kit for 18" - 24" |
| 049 188 | 8" | Flange Kit for 18" - 24" |
| 049 208 | 10" | Flange Kit for 18" - 24" |
| 049 268 | 6" | Flange Kit for 24" - 36" |
| 049 288 | 8" | Flange Kit for 24" - 36" |
| 049 308 | 10" | Flange Kit for 24" - 36" |
| 049 328 | 12" | Flange Kit for 24" - 36" |

AIR-LOC® LEAK LOCATOR FRONT PLUGS

| | | |
|---------|-----------|----------------------------------|
| 267 068 | 6" - 10" | Front Plug |
| 267 088 | 8" - 12" | Front Plug |
| 267 128 | 12" - 18" | Front Plug |
| 401 308 | 15" - 30" | Front Plug with New Rupture Disc |
| 401 428 | 24" - 42" | Front Plug with New Rupture Disc |
| 401 608 | 40" - 60" | Front Plug with New Rupture Disc |



AIR-LOC® LEAK LOCATOR FRONT PLUG REPLACEABLE SLEEVE KITS

| | | |
|---------|-----------|------------------------|
| 023 448 | 6" - 10" | Replaceable Sleeve Kit |
| 023 458 | 8" - 12" | Replaceable Sleeve Kit |
| 023 468 | 12" - 18" | Replaceable Sleeve Kit |

AIR-LOC® LEAK LOCATOR BACK PLUGS

| | | |
|---------|-----------|-----------|
| 275 078 | 6" - 10" | Back Plug |
| 275 108 | 8" - 12" | Back Plug |
| 275 138 | 12" - 18" | Back Plug |



Category 13 cherne Underground

13



| Product No. | Size | Description | Ctn. Qty. |
|-------------|------|-------------|-----------|
|-------------|------|-------------|-----------|

FACTORY REPLACEABLE SLEEVE MUNI-BALL® PLUGS

| | | | |
|---------|-----------|-------------------------------------|--|
| 265 110 | 6" - 12" | Factory Replaceable Muni-Ball® Plug | |
| 265 138 | 12" - 21" | Factory Replaceable Muni-Ball® Plug | |
| 265 144 | 16" - 24" | Factory Replaceable Muni-Ball® Plug | |
| 265 152 | 24" - 36" | Factory Replaceable Muni-Ball® Plug | |

*Call Customer Service for cost to replace the sleeve on these plugs.

PETRO-PLUG® FACTORY REPLACEABLE SLEEVE MUNI-BALL® PLUGS

| | | | |
|---------|-----------|-------------------------------------|--|
| 265 160 | 12" - 18" | Factory Replaceable Muni-Ball® Plug | |
| 265 179 | 16" - 24" | Factory Replaceable Muni-Ball® Plug | |
| 265 187 | 24" - 36" | Factory Replaceable Muni-Ball® Plug | |

*Call Customer Service for cost to replace the sleeve on these plugs.

LARGE SINGLE-SIZE TEST-BALL® PLUGS (CUSTOM SIZES AVAILABLE)

| | | | |
|---------|-----|-----------------------------|--|
| 277 108 | 15" | Single-Size Test-Ball® Plug | |
| 277 118 | 18" | Single-Size Test-Ball® Plug | |
| 277 128 | 20" | Single-Size Test-Ball® Plug | |
| 277 134 | 21" | Single-Size Test-Ball® Plug | |
| 277 142 | 24" | Single-Size Test-Ball® Plug | |
| 277 150 | 27" | Single-Size Test-Ball® Plug | |
| 277 169 | 30" | Single-Size Test-Ball® Plug | |
| 277 177 | 33" | Single-Size Test-Ball® Plug | |
| 277 185 | 36" | Single-Size Test-Ball® Plug | |
| 277 193 | 42" | Single-Size Test-Ball® Plug | |
| 277 207 | 48" | Single-Size Test-Ball® Plug | |
| 277 215 | 54" | Single-Size Test-Ball® Plug | |
| 277 223 | 60" | Single-Size Test-Ball® Plug | |
| 277 231 | 66" | Single-Size Test-Ball® Plug | |

LARGE SINGLE-SIZE MUNI-BALL® PLUGS (CUSTOM SIZES AVAILABLE)



| | | | |
|---------|-----|-----------------------------|--|
| 266 027 | 30" | Single-Size Muni-Ball® Plug | |
| 266 035 | 33" | Single-Size Muni-Ball® Plug | |
| 266 043 | 36" | Single-Size Muni-Ball® Plug | |
| 266 051 | 42" | Single-Size Muni-Ball® Plug | |
| 266 078 | 48" | Single-Size Muni-Ball® Plug | |
| 266 086 | 54" | Single-Size Muni-Ball® Plug | |
| 266 094 | 60" | Single-Size Muni-Ball® Plug | |
| 266 108 | 66" | Single-Size Muni-Ball® Plug | |



URETHANE PLUG REPAIR KIT

| | | | |
|---------|---------------------|--|--|
| 008 948 | Patch Kit 12" x 24" | | |
|---------|---------------------|--|--|



LARGE MULTI-SIZE TEST-BALL® PLUGS

| | | | |
|---------|-----------|----------------------------|--|
| 301 118 | 54" - 72" | Multi-Size Test-Ball® Plug | |
|---------|-----------|----------------------------|--|

Product
No.

Size

Description

Ctn.
Qty.



UNDERGROUND MECHANICAL PLUGS

T-HANDLE ALUMINUM GRIPPER® PLUGS (WITH BY-PASS)

| | | |
|---------|-----|----------------------------|
| 272 949 | 6" | Gripper® Plug with By-Pass |
| 272 957 | 8" | Gripper® Plug with By-Pass |
| 272 965 | 10" | Gripper® Plug with By-Pass |
| 272 973 | 12" | Gripper® Plug with By-Pass |
| 272 981 | 15" | Gripper® Plug with By-Pass |
| 272 998 | 18" | Gripper® Plug with By-Pass |



T-HANDLE ALUMINUM GRIPPER® PLUGS (NON BY-PASS)

| | | |
|---------|-----|------------------------------|
| 272 892 | 6" | Gripper® Plug (Non By-Pass) |
| 272 906 | 8" | Gripper® Plug (Non By-Pass) |
| 272 914 | 10" | Gripper® Plug (Non By-Pass) |
| 272 922 | 12" | Gripper® Plug (Non By-Pass) |
| 272 930 | 15" | Gripper® Plug (Non By-Pass)* |
| 272 888 | 18" | Gripper® Plug (Non By-Pass)* |

*Concrete and clay pipe sizes only.

REPLACEMENT O-RING

| | | |
|---------|-----|---------------------|
| 017 895 | 6" | Replacement O-Ring |
| 006 105 | 8" | Replacement O-Ring |
| 006 113 | 10" | Replacement O-Ring |
| 014 746 | 12" | Replacement O-Ring |
| 006 145 | 15" | Replacement O-Ring* |
| 017 863 | 18" | Replacement O-Ring* |

*Concrete and clay pipe sizes only.



POINT REPAIR CARRIERS

MULTI-SIZE POINT REPAIR CARRIERS 4" - 6" DIAMETER

| | | |
|---------|--------|-------------------------------|
| 278 548 | 4 - 6" | Multi-Size Carriers - 5 foot |
| 278 558 | 4 - 6" | Multi-Size Carriers - 8 foot |
| 278 508 | 4 - 6" | Multi-Size Carriers - 10 foot |
| 278 568 | 4 - 6" | Multi-Size Carriers - 12 foot |
| 278 578 | 4 - 6" | Multi-Size Carriers - 15 foot |

MULTI-SIZE POINT REPAIR CARRIERS 6" - 10" DIAMETER

| | | |
|---------|---------|-------------------------------|
| 278 588 | 6 - 10" | Multi-Size Carriers - 5 foot |
| 278 598 | 6 - 10" | Multi-Size Carriers - 8 foot |
| 278 518 | 6 - 10" | Multi-Size Carriers - 10 foot |
| 278 608 | 6 - 10" | Multi-Size Carriers - 12 foot |
| 278 618 | 6 - 10" | Multi-Size Carriers - 15 foot |

MULTI-SIZE POINT REPAIR CARRIERS 8" - 12" DIAMETER

| | | |
|---------|---------|-------------------------------|
| 278 628 | 8 - 12" | Multi-Size Carriers - 5 foot |
| 278 638 | 8 - 12" | Multi-Size Carriers - 8 foot |
| 278 528 | 8 - 12" | Multi-Size Carriers - 10 foot |
| 278 648 | 8 - 12" | Multi-Size Carriers - 12 foot |
| 278 658 | 8 - 12" | Multi-Size Carriers - 15 foot |

Category 13 cherne Underground



13



| Product No. | Size | Description | Ctn. Qty. |
|-------------|------|-------------|-----------|
|-------------|------|-------------|-----------|

DEFLECTION GAUGES – SETS, COMPONENTS & MANDREL ASSEMBLIES

Custom Sized Fin Sets Available by calling Cherne Customer Service



ASTM 5% DEFLECTION SDR 35 PIPE - COMPLETE SET

| | | | |
|---------|----------------|---------------------------------|--|
| 285 005 | 6", 8", & 10" | Deflection Gauge Set (Complete) | |
| 285 021 | 8", 10", & 12" | Deflection Gauge Set (Complete) | |

ASTM 5% DEFLECTION SDR 26 PIPE - COMPLETE SET

| | | | |
|---------|----------------|---------------------------------|--|
| 285 688 | 6", 8", & 10" | Deflection Gauge Set (Complete) | |
| 285 698 | 8", 10", & 12" | Deflection Gauge Set (Complete) | |

ASTM 7½% DEFLECTION SDR 35 PIPE - COMPLETE SET

| | | | |
|---------|----------------|---------------------------------|--|
| 285 013 | 6", 8", & 10" | Deflection Gauge Set (Complete) | |
| 285 048 | 8", 10", & 12" | Deflection Gauge Set (Complete) | |

DEFLECTION GAUGE COMPONENTS

| | | | |
|---------|-----|---|--|
| 285 617 | 10" | Mandrel Assembly (For 4" - 15" Fin Sets) | |
| 285 250 | 24" | Mandrel Assembly (For 18" - 48" Fin Sets) | |
| 030 268 | | Deflection Gauge Box | |

Category 13 Cherne Underground

13

| Product No. | Size | Description | Ctn. Qty. |
|-------------|------|-------------|-----------|
|-------------|------|-------------|-----------|



ALUMINUM DEFLECTION GAUGES

ASTM 5% DEFLECTION SDR 35 PIPE (USES 10" MANDREL)

| | | |
|---------|-----|---------|
| 285 056 | 4" | Fin Set |
| 285 072 | 6" | Fin Set |
| 285 080 | 8" | Fin Set |
| 285 099 | 10" | Fin Set |
| 285 102 | 12" | Fin Set |
| 285 110 | 15" | Fin Set |



ASTM 5% DEFLECTION SDR 35 PIPE (USES 24" MANDREL)

| | | |
|---------|-----|---------|
| 285 536 | 18" | Fin Set |
| 285 544 | 21" | Fin Set |
| 285 552 | 24" | Fin Set |
| 285 595 | 27" | Fin Set |

ASTM 7½% DEFLECTION SDR 35 PIPE (USES 10" MANDREL)

| | | |
|---------|-----|---------|
| 285 137 | 4" | Fin Set |
| 285 153 | 6" | Fin Set |
| 285 161 | 8" | Fin Set |
| 285 188 | 10" | Fin Set |
| 285 196 | 12" | Fin Set |
| 285 218 | 15" | Fin Set |

ASTM 7½% DEFLECTION SDR 35 PIPE (USES 24" MANDREL)

| | | |
|---------|-----|---------|
| 285 560 | 18" | Fin Set |
| 285 579 | 21" | Fin Set |
| 285 587 | 24" | Fin Set |
| 285 609 | 27" | Fin Set |

ASTM 5% DEFLECTION SDR 26 PIPE (USES 10" MANDREL)

| | | |
|---------|-----|---------|
| 285 638 | 6" | Fin Set |
| 285 648 | 8" | Fin Set |
| 285 658 | 10" | Fin Set |
| 285 668 | 12" | Fin Set |
| 285 678 | 15" | Fin Set |

CUSTOM FIN SETS (USES 10" MANDREL)

Must specify: gauge outer diameter, % deflection, type of pipe.

| | |
|---------|---|
| 290 008 | Custom Fin Set (O.D. Range 5.59-7.09) |
| 290 018 | Custom Fin Set (O.D. Range 7.10-7.28) |
| 290 028 | Custom Fin Set (O.D. Range 7.29-8.84) |
| 290 038 | Custom Fin Set (O.D. Range 8.85-9.08) |
| 290 048 | Custom Fin Set (O.D. Range 9.09-10.50) |
| 290 058 | Custom Fin Set (O.D. Range 10.51-16.49) |

CUSTOM FIN SETS (USES 24" MANDREL)

Must specify: gauge outer diameter, % deflection, type of pipe.

| | |
|---------|--|
| 290 078 | Custom Fin Set (O.D. Range 16.50-24.00) |
| 290 088 | Custom Fin Set (O.D. Range 524.01-30.00) |
| 290 098 | Custom Fin Set (O.D. Range 30.01-36.00) |
| 290 108 | Custom Fin Set (O.D. Range 36.01-48.00) |

Category 13 cherne Underground

13



| Product No. | Size | Description | Ctn. Qty. |
|-------------|------|-------------|-----------|
|-------------|------|-------------|-----------|

FIXED STEEL DEFLECTION GAUGES

ASTM 5% DEFLECTION SDR 35 PIPE

| | | |
|---------|-----|-------------|
| 286 068 | 6" | Steel Gauge |
| 286 078 | 8" | Steel Gauge |
| 286 088 | 10" | Steel Gauge |
| 286 098 | 12" | Steel Gauge |
| 286 108 | 15" | Steel Gauge |
| 286 118 | 18" | Steel Gauge |
| 286 278 | 21" | Steel Gauge |
| 286 288 | 24" | Steel Gauge |



ASTM 7½% DEFLECTION SDR 35 PIPE

| | | |
|---------|-----|-------------|
| 286 188 | 6" | Steel Gauge |
| 286 198 | 8" | Steel Gauge |
| 286 208 | 10" | Steel Gauge |
| 286 218 | 12" | Steel Gauge |
| 286 228 | 15" | Steel Gauge |
| 286 238 | 18" | Steel Gauge |

ASTM 5% DEFLECTION SDR 26 PIPE

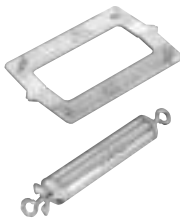
| | | |
|---------|-----|-------------|
| 286 008 | 6" | Steel Gauge |
| 286 018 | 8" | Steel Gauge |
| 286 028 | 10" | Steel Gauge |
| 286 038 | 12" | Steel Gauge |
| 286 048 | 15" | Steel Gauge |
| 286 058 | 18" | Steel Gauge |

ASTM 7½% DEFLECTION SDR 26 PIPE

| | | |
|---------|-----|-------------|
| 286 128 | 6" | Steel Gauge |
| 286 138 | 8" | Steel Gauge |
| 286 148 | 10" | Steel Gauge |
| 286 158 | 12" | Steel Gauge |
| 286 168 | 15" | Steel Gauge |
| 286 178 | 18" | Steel Gauge |

CUSTOM STEEL GAUGES

Must specify: gauge outer diameter, % deflection, type of pipe.



| | |
|---------|---|
| 286 408 | Custom Steel Gauge (O.D. Range 6.19-6.49) |
| 286 418 | Custom Steel Gauge (O.D. Range 6.50-8.29) |
| 286 428 | Custom Steel Gauge (O.D. Range 8.30-9.99) |
| 286 438 | Custom Steel Gauge (O.D. Range 10.00-12.55) |
| 286 448 | Custom Steel Gauge (O.D. Range 12.56-15.33) |
| 286 458 | Custom Steel Gauge (O.D. Range 15.34-18.99) |
| 286 468 | Custom Steel Gauge (O.D. Range 19.00-20.99) |
| 286 478 | Custom Steel Gauge (O.D. Range 21.00-23.00) |

Category 13 Cherne Underground

13

Product
No.

Size

Description

Ctn.
Qty.

DEFLECTION GAUGE PROVING RINGS

ASTM 5% DEFLECTION SDR 35 PIPE

| | | |
|---------|-----|--------------|
| 073 199 | 6" | Proving Ring |
| 073 202 | 8" | Proving Ring |
| 073 210 | 10" | Proving Ring |
| 073 229 | 12" | Proving Ring |
| 073 237 | 15" | Proving Ring |
| 075 868 | 18" | Proving Ring |

ASTM 7½% DEFLECTION SDR 35 PIPE

| | | |
|---------|-----|--------------|
| 073 253 | 8" | Proving Ring |
| 073 261 | 10" | Proving Ring |
| 073 288 | 12" | Proving Ring |



AIR-LOC® TESTING EQUIPMENT

AIR-LOC® AIR TESTING EQUIPMENT

| | |
|------------------|--|
| 253 278 | Complete Line Acceptance Kit |
| <i>Includes:</i> | Hi-Flow™ Portable Air-Loc® Control Panel |
| | • 50 Ft. Triple Hose Assembly |
| | • 30 Ft. Poly-Lift Line/Inflation Hose |
| | • Test Pump with Gauge |



Category 13 cherne Underground

13



| Product No. | Size | Description | Ctn. Qty. |
|-------------|------|-------------|-----------|
|-------------|------|-------------|-----------|

LEAK LOCATION COMPONENTS

Items needed in addition to acceptance kit:



| | | | |
|---------|---------|---|--|
| 253 308 | 500 Ft. | Portable Hose Reel w/ Hose w/ Air Motor | |
| 043 338 | 22 Ft. | Single Hose w/ Cable (Ball to Ball) | |

AIR-LOC® TESTING ACCESSORIES

| | | | |
|---------|--------|---|--|
| 304 708 | | Hi-Flow™ Portable Air-Loc® Control Panel | |
| 026 358 | | 0-15 PSIG Gauge - Test Pressure | |
| 014 848 | | 0-160 PSIG Gauge - Compressor Pressure | |
| 014 828 | | 0-60 PSIG Gauge - Ball Pressure | |
| 043 048 | | Test & Ball Pressure Valves (3-Way) | |
| 296 643 | | Test & Ball Pressure Regulators | |
| 251 623 | | Quick Disconnect - 1/4" O.D. (M) x 1/4" NPT (M) | |
| 043 338 | 22 Ft. | Single Hose w/ Cable (Ball to Ball) | |
| 257 108 | 25 Ft. | Hi-Flow™ Triple Hose Assembly | |
| 257 098 | 50 Ft. | Hi-Flow™ Triple Hose Assembly | |
| 035 268 | 25 Ft. | Triple Hose Assembly | |
| 257 038 | 50 Ft. | Triple Hose Assembly | |

AIR-LOC® TESTING ACCESSORIES

AIR-LOC® PLUG CONVERSION KITS



| | | | |
|---------|------------------|---|--|
| 028 588 | | 3/4" NPT (M) Plug Conversion Kit w/ Q.D. | |
| | <i>Use with:</i> | <ul style="list-style-type: none"> • 3" Single-Size Muni-Ball® Plug (262 021) • 4" Single-Size Muni-Ball® Plug (262 048) • 4" - 6" Multi-Size Muni-Ball® Plug (262 048) | |
| 028 598 | | 1-1/2" NPT (M) Plug Conversion Kit w/ Q.D. | |
| | <i>Use with:</i> | <ul style="list-style-type: none"> • 6" Single-Size Muni-Ball® Plug (262 064) • 6" - 8" Multi-Size Muni-Ball® Plug (265 068) | |
| 028 608 | | 2" NPT (M) Plug Conversion Kit w/ Q.D. | |
| 041 748 | | Hi-Flow™ 2" NPT (M) Plug Conversion Kit w/ Q.D.* | |
| | <i>Use with:</i> | <ul style="list-style-type: none"> • 8" - 10" Multi-Size Muni-Ball® Plug (265 078) • 8" - 12" Multi-Size Muni-Ball® Plug (265 098) | |
| 028 618 | | 3" NPT (M) Plug Conversion Kit w/ Q.D. | |
| 041 758 | | Hi-Flow™ 3" NPT (M) Plug Conversion Kit w/ Q.D.* | |
| | <i>Use with:</i> | <ul style="list-style-type: none"> • 8" Single-Size Muni-Ball® Plug (262 080) • 10" Single-Size Muni-Ball® Plug (262 110) • 12" Single-Size Muni-Ball® Plug (262 129) • 15" - 16" Single-Size Muni-Ball® Plug (262 137) | |
| 028 628 | | 4" NPT (M) Plug Conversion Kit w/ Q.D. | |
| 041 768 | | Hi-Flow™ 4" NPT (M) Plug Conversion Kit w/ Q.D.* | |
| | <i>Use with:</i> | <ul style="list-style-type: none"> • 18" Single-Size Muni-Ball® Plug (262 188) • 21" Single-Size Muni-Ball® Plug (262 218) • 24" Single-Size Muni-Ball® Plug (262 242) • 12" - 18" Multi-Size Muni-Ball® Plug (265 128) | |

*For Sewer Air/Line Acceptance Testing Only (Not Leak Location)



| Product No. | Size | Description | Ctn. Qty. |
|-------------------------------------|-----------|--|-----------|
| AIR-LOC® CAP CONVERSION KITS | | | |
| 049 028 | | 2" NPT (F) Cap Conversion Kit w/ O.D. | |
| 049 108 | | Hi-Flow 2" NPT (F) Cap Conversion Kit w/ O.D.* | |
| | Use with: | <ul style="list-style-type: none"> • 8" - 16" i-series Muni-Ball® Plug (365 168) • 12" - 24" i-series Muni-Ball® Plug (365 248) | |
| 028 648 | | 2-1/2" NPT (F) Cap Conversion Kit w/ O.D. | |
| 041 778 | | Hi-Flow™ 2-1/2" NPT (F) Cap Conversion Kit w/ O.D.* | |
| | Use with: | <ul style="list-style-type: none"> • 12" - 21" Factory Replaceable Sleeve Multi-Size Muni-Ball® Plug (265 138) • 15" - 30" Multi-Size Muni-Ball® Plug (262 552) • 24" - 66" Single-Size (Urethane) Muni-Ball® Plug | |
| 028 668 | | 4" NPT (F) Cap Conversion Kit w/ O.D. | |
| 041 788 | | Hi-Flow™ 4" NPT (F) Cap Conversion Kit w/ O.D.* | |
| | Use with: | <ul style="list-style-type: none"> • 24" - 42" Multi-Size Muni-Ball® Plug (262 560) • 24" - 48" Multi-Size Muni-Ball® Plug (300 488) • 40" - 60" Multi-Size Muni-Ball® Plug (262 587) • 48" - 72" Multi-Size Muni-Ball® Plug (365 728) • 8" - 10" Big Mouth Plug (269 008) • 16" - 24" Factory Replaceable Sleeve Multi-Size Muni-Ball® Plug (265 144) • 24" - 36" Factory Replaceable Sleeve Multi-Size Muni-Ball® Plug (265 152) • 54" - 96" Factory Replaceable Sleeve Multi-Size Muni-Ball® Plug (375 968) | |
| 041 718 | | Hi-Flow™ 6" NPT (F) Cap Conversion Kit w/ O.D.* | |
| | Use with: | <ul style="list-style-type: none"> • 10" - 12" Big Mouth Plug (269 018) • 12" - 15" Big Mouth Plug (269 028) | |



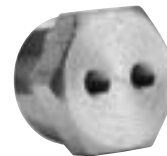
*For Sewer Air/Line Acceptance Testing Only (Not Leak Location)

AIR-LOC® COMPONENTS

| | |
|---------|----------------------------------|
| 299 510 | Rotary Union – Complete |
| 251 534 | Rotary Union Quad Rings (Qty. 4) |
| 017 914 | Disc Marker – Red |
| 017 922 | Disc Marker – Blue |
| 017 930 | Disc Marker – Yellow |
| 045 668 | Disc Marker – Blue – Hi-Flow™ |

MODIFIED PLUGS

| | |
|---------|-------------------------------------|
| 028 578 | 3/4" Modified Plug: (2) 1/8" Taps |
| 112 690 | 1-1/2" Modified Plug: (2) 1/4" Taps |
| 300 276 | 2" Modified Plug: (2) 1/4" Taps |
| 112 712 | 3" Modified Plug: (2) 1/4" Taps |
| 112 720 | 4" Modified Plug: (2) 1/4" Taps |



MODIFIED CAPS

| | |
|---------|---------------------------------------|
| 019 538 | 2" Modified Cap: (2) 1/4" Taps |
| 065 676 | 2-1/2" Modified Cap: (2) 1/4" Taps |
| 085 758 | 4" Modified Cap: (2) 1/4" Taps |
| 008 323 | 2-1/2" Modified Cap: 1/4" & 3/4" Taps |
| 041 838 | 2-1/2" Modified Cap: 1/2" & 1/4" Taps |
| 041 848 | 4" Modified Cap: 1/2" & 1/4" Taps |
| 041 808 | 2" Modified Cap: 1/2" & 1/4" Taps |
| 041 818 | 3" Modified Cap: 1/2" & 1/4" Taps |

Category 13 cherne Underground



13



| Product No. | Size | Description | Ctn. Qty. |
|-------------|------|-------------|-----------|
|-------------|------|-------------|-----------|

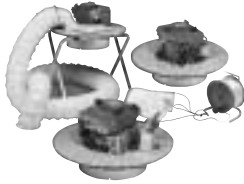
AIR FITTINGS



| | | | |
|---------|--|---|--|
| 277 037 | | 1/4" Inflation Fitting | |
| 068 527 | | 1/8" Inflation Fitting | |
| 003 093 | | Quick Disconnect - | |
| | | 1/4" Q.D. (F) x 3/8" Hose Barb | |
| 302 112 | | Quick Disconnect (F) x 1/4" NPT | |
| 026 708 | | Quick Disconnect (F) x 1/2" NPT | |
| 251 623 | | Quick Disconnect - | |
| | | 1/4" Q.D. (M) x 1/4" NPT (M) | |
| 042 068 | | Quick Disconnect (M) x 1/2" NPT | |
| 251 666 | | Swivel Ball - 3/8" (F) x 3/8" Hose Barb | |
| 251 615 | | Swivel - 3/8" (M) x 1/4" NPT (M) | |
| 101 478 | | 3/4" NPT (M) x 2" Lug Coupling | |

AIR-LOC® FAN ASSEMBLIES

**AIR-LOC® LINE STRINGER/VENTILATOR/SMOKE BLOWER
BRIGGS & STRATTON ENGINE**



| | | | |
|---------|--|--|--|
| 301 000 | | Line Stringer Complete Includes Air-Loc® Fan Assembly, 1000' Rope Reel & 6" - 10" Parachute | |
| 303 232 | | Ventilator Includes Air-Loc® Fan Assembly & Ventilator Conversion Kit | |
| 303 550 | | Smoke Blower w/ "Smoke Bomb" Kit Air-Loc® Fan Assembly w/ Smoke Blower Fan & Smoke Bomb Holder | |
| 303 008 | | Smoke Blower w/ Fluid Smoke Kit Air-Loc® Fan Assembly w/ Smoke Blower Fan, Fluid Smoke Conversion Kit & Fluid Smoke Container | |

**AIR-LOC® LINE STRINGER/VENTILATOR/SMOKE BLOWER
HONDA ENGINE**

| | | | |
|---------|--|--|--|
| 303 318 | | Line Stringer Complete Includes Air-Loc® Fan Assembly, 1000' Rope Reel & 6" - 10" Parachute | |
| 303 338 | | Ventilator Includes Air-Loc® Fan Assembly & Ventilator Conversion Kit | |
| 303 568 | | Smoke Blower Air-Loc® Fan Assembly w/ Smoke Blower Fan & Smoke Bomb Holder | |
| 303 018 | | Smoke Blower w/ Fluid Smoke Kit Air-Loc® Fan Assembly w/ Smoke Blower Fan, Fluid Smoke Conversion Kit & Fluid Smoke Container | |



| Product No. | Size | Description | Ctn. Qty. |
|-------------|------|-------------|-----------|
|-------------|------|-------------|-----------|

LINE STRINGER/VENTILATOR/SMOKE BLOWER COMPONENTS

| | | | |
|---------|-----------|--|--|
| 012 100 | | Air-Loc® Fan Assembly – Briggs & Stratton Engine | |
| 013 108 | | Air-Loc® Fan Assembly – Honda Engine | |
| 300 608 | | 1000' Nylon Rope and Reel | |
| 014 714 | | Line Stringer Replacement Fan (Right pitch) | |
| 014 722 | | Smoke Blower Replacement Fan (Left pitch) | |
| 035 318 | | Replacement Pad for Fan Assembly | |
| 066 303 | 4" | Parachute | |
| 015 403 | 6" - 10" | Parachute | |
| 050 628 | 8" - 12" | Parachute | |
| 300 594 | 10" - 18" | Parachute | |
| 006 525 | 18" - 36" | Parachute | |
| 045 158 | | Smoke Bomb Holder | |
| 036 488 | | 2 Gallon Liquid Smoke Container | |
| 036 308 | | Fluid Smoke Conversion Kit (Briggs Engine) | |
| 038 558 | | Fluid Smoke Conversion Kit (Honda Engine) | |
| 008 250 | | Ventilator Conversion Kit (Includes 20' hose and stand) | |
| 007 981 | | 20' Ventilator Hose & Clamp | |

SMOKE PRODUCTS

| | | | |
|---------|--|--|----|
| 035 058 | | One Gallon Fluid Smoke | |
| 035 068 | | Five Gallon Fluid Smoke | |
| 034 348 | | 30 Second (4000 cubic ft) SGD | 12 |
| 034 358 | | 60 Second (8000 cubic ft) SGD | 12 |
| 034 368 | | 3 Minute (40,000 cubic ft) SGD | 12 |
| 034 378 | | 3 Minute (40,000 cubic ft) SGD (Double Wick) | 12 |

HI-FLOW™ AIR-LOC® MANHOLE TESTERS

AIR-LOC® VACUUM MANHOLE TESTERS – BLADDER STYLE

| | | | |
|---------|-----|------------------------------|--|
| 210 248 | 24" | Bladder Style Manhole Tester | |
| 210 268 | 26" | Bladder Style Manhole Tester | |
| 210 298 | 29" | Bladder Style Manhole Tester | |
| 210 308 | 30" | Bladder Style Manhole Tester | |
| 210 328 | 32" | Bladder Style Manhole Tester | |
| 210 368 | 36" | Bladder Style Manhole Tester | |



AIR-LOC® VACUUM MANHOLE TESTERS – REPLACEMENT BLADDERS

| | | | |
|---------|-----|---------------------|--|
| 098 485 | 24" | Replacement Bladder | |
| 008 404 | 26" | Replacement Bladder | |
| 060 678 | 29" | Replacement Bladder | |
| 099 406 | 30" | Replacement Bladder | |
| 063 339 | 32" | Replacement Bladder | |
| 063 541 | 36" | Replacement Bladder | |

AIR-LOC® VACUUM MANHOLE TESTERS – GAUGES

| | | | |
|---------|--|--------------------------------|--|
| 304 058 | | 0-30 Hg. Gauge – Liquid Filled | |
| 251 372 | | 0-60 PSIG Gauge | |

Category 13 cherne Underground

13



| Product No. | Size | Description | Ctn. Qty. |
|-------------|------|-------------|-----------|
|-------------|------|-------------|-----------|



VACUUM HEAD MANHOLE TESTERS - PLATE STYLE

| | | | |
|---------|-----|----------------------|--|
| 220 328 | 32" | Plate Manhole Tester | |
| 220 388 | 38" | Plate Manhole Tester | |
| 220 448 | 44" | Plate Manhole Tester | |



| | | | |
|---------|-----|------------------|--|
| 033 018 | 32" | Plate Repair Kit | |
| 033 028 | 38" | Plate Repair Kit | |
| 023 748 | 44" | Plate Repair Kit | |

RETRO-FIT KITS

| | | | |
|---------|--|---------------------------------------|--|
| 056 508 | | Old Pump To New Head Assembly | |
| 200 918 | | Old Head To New Pump/Vacuum Generator | |

VACUUM PUMPS



| | | | |
|---------|--|--|--|
| 278 088 | | Vacuum Pump w/ 5 H.P. Engine (Honda Engine) | |
| 278 168 | | Vacuum Pump w/ 5 H.P. Engine (Briggs Engine) | |
| 045 918 | | Wheel Kit Option | |

| | | | |
|---------|--|--|--|
| 019 501 | | Replacement Pump | |
| 015 823 | | Replacement Filter | |
| 019 321 | | Replacement Graphite Vane (4 Required) | |
| 107 379 | | Filter Jar | |



VACUUM GENERATORS

| | | | |
|---------|--|---|--|
| 200 458 | | Vacuum Generator 450 | |
| 033 868 | | Replacement Silencer for Vacuum Generator 200/450 | |
| 035 248 | | Replacement Filter for Vacuum Generator 200/450 | |

| | | | |
|---------|--|---|--|
| 200 908 | | Vacuum Generator 600 | |
| 054 268 | | Replacement Silencer For Vacuum Generator 600 | |

Product
No.

Size

Description

Ctn.
Qty.

AIR-LOC® JOINT TESTERS & COMPONENTS

Metric Joint Testers available upon request.

JOINT TESTERS - COMPLETE

Includes wheels and control panel.



| | | |
|---------|------|-------------------------|
| 009 018 | 21" | Joint Tester - Complete |
| 009 028 | 24" | Joint Tester - Complete |
| 009 038 | 27" | Joint Tester - Complete |
| 009 048 | 30" | Joint Tester - Complete |
| 009 058 | 33" | Joint Tester - Complete |
| 009 068 | 36" | Joint Tester - Complete |
| 009 078 | 39" | Joint Tester - Complete |
| 009 088 | 42" | Joint Tester - Complete |
| 009 098 | 48" | Joint Tester - Complete |
| 009 108 | 54" | Joint Tester - Complete |
| 009 118 | 60" | Joint Tester - Complete |
| 009 128 | 66" | Joint Tester - Complete |
| 009 138 | 72" | Joint Tester - Complete |
| 009 158 | 78" | Joint Tester - Complete |
| 009 168 | 84" | Joint Tester - Complete |
| 009 178 | 90" | Joint Tester - Complete |
| 009 188 | 96" | Joint Tester - Complete |
| 009 198 | 102" | Joint Tester - Complete |
| 009 208 | 108" | Joint Tester - Complete |
| 009 228 | 120" | Joint Tester - Complete |

JOINT TESTERS - PLAIN

Does not include wheels or control panel.

| | | |
|---------|------|-----------------------|
| 012 018 | 21" | Joint Tester - Plain* |
| 012 028 | 24" | Joint Tester - Plain* |
| 012 038 | 27" | Joint Tester - Plain* |
| 012 048 | 30" | Joint Tester - Plain* |
| 012 058 | 33" | Joint Tester - Plain* |
| 012 066 | 36" | Joint Tester - Plain* |
| 012 078 | 39" | Joint Tester - Plain* |
| 012 088 | 42" | Joint Tester - Plain* |
| 012 098 | 48" | Joint Tester - Plain* |
| 012 148 | 54" | Joint Tester - Plain* |
| 012 118 | 60" | Joint Tester - Plain* |
| 012 128 | 66" | Joint Tester - Plain* |
| 012 138 | 72" | Joint Tester - Plain* |
| 012 158 | 78" | Joint Tester - Plain* |
| 012 168 | 84" | Joint Tester - Plain* |
| 012 178 | 90" | Joint Tester - Plain* |
| 012 188 | 96" | Joint Tester - Plain* |
| 012 198 | 102" | Joint Tester - Plain* |
| 012 208 | 108" | Joint Tester - Plain* |
| 012 228 | 120" | Joint Tester - Plain* |

*Plain Joint Testers do not include wheels or control panel.



Category 13 cherne Underground



13



| Product No. | Size | Description | Ctn. Qty. |
|-------------|------|-------------|-----------|
|-------------|------|-------------|-----------|

REPLACEMENT END ELEMENTS

| | | | |
|---------|-----|-------------------------|--|
| 098 485 | | Replacement End Element | |
| 091 456 | | Replacement End Element | |
| 091 464 | | Replacement End Element | |
| 063 339 | 30" | End Element | |
| 063 347 | | Replacement End Element | |
| 063 355 | | Replacement End Element | |
| 070 319 | | Replacement End Element | |
| 063 363 | | Replacement End Element | |
| 063 371 | | Replacement End Element | |
| 063 398 | | Replacement End Element | |
| 063 401 | | Replacement End Element | |
| 063 428 | | Replacement End Element | |
| 063 436 | | Replacement End Element | |
| 063 444 | | Replacement End Element | |
| 063 452 | | Replacement End Element | |
| 063 460 | | Replacement End Element | |
| 063 479 | | Replacement End Element | |
| 063 487 | | Replacement End Element | |
| 063 495 | | Replacement End Element | |
| 063 517 | | Replacement End Element | |

Category **13** Cherne Underground

13

Product
No.

Size

Description

Ctn.
Qty.

AIR-LOC® JOINT TESTER ACCESSORIES

JOINT TESTER CONTROL PANEL ASSEMBLY

| | | |
|---------|--|-----------------------------|
| 010 048 | | Control Panel – Complete |
| 026 358 | | Gauge, 0-15 PSIG (4" Dial) |
| 087 602 | | Gauge, 0-60 PSIG (4" Dial) |
| 014 838 | | Gauge, 0-100 PSIG (2" Dial) |
| 007 892 | | 3-Way Valve |
| 296 643 | | Regulator |



JOINT TESTER WHEEL ASSEMBLIES (TWO REQUIRED)

| | | |
|---------|-----------|----------------|
| 086 363 | 21" - 36" | Wheel Assembly |
| 067 008 | 39" - 54" | Wheel Assembly |
| 093 661 | 60" - 90" | Wheel Assembly |
| 024 358 | 96" - up | Wheel Assembly |



REPLACEMENT GASKETS

| | | |
|---------|------------|--------|
| 010 628 | 27" - 54" | Gasket |
| 010 638 | 60" - 120" | Gasket |



HOSE ASSEMBLY

| | | |
|---------|--|----------------------------------|
| 013 008 | | 12' Hose - Panel to Joint Tester |
|---------|--|----------------------------------|

WATER-LINE TESTING EQUIPMENT

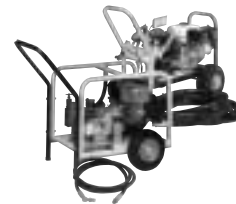
AQUA-SEAL® HIGH PRESSURE PLUGS

| | | |
|---------|-----|----------------------------------|
| 278 017 | 6" | Aqua-Seal® Plug |
| 278 025 | 8" | Aqua-Seal® Plug |
| 278 033 | 10" | Aqua-Seal® Plug |
| 278 041 | 12" | Aqua-Seal® Plug |
| 016 003 | | Aqua-Seal® Hydrostatic Hand Pump |



AQUA-LOC® HYDROSTATIC TEST PUMPS & ACCESSORIES

| | | |
|---------|--|--|
| 278 058 | | 9.5 GPM Diaphragm Style Pump w/ Briggs |
| 278 068 | | 9.5 GPM Diaphragm Style Pump w/ Honda |
| 278 178 | | 35 GPM Diaphragm Style Pump w/ Honda |
| 278 148 | | Piston Style Pump w/ Briggs Engine |
| 278 138 | | Piston Style Pump w/ Honda Engine |
| 045 918 | | Wheel Kit Option (Diaphragm & Piston) |
| 039 168 | | 16 Gallon Water Tank |
| 031 198 | | 12' Output Hose (Diaphragm & Piston) |
| 022 828 | | Quick Disconnect For Output Hose |



Category 13 cherne Underground

13



| Product No. | Size | Description | Ctn. Qty. |
|-------------|------|-------------|-----------|
|-------------|------|-------------|-----------|

PUMP REPAIR PARTS - 9.5 GPM DIAPHRAGM PUMP

| | | | |
|---------|--|-----------------------------------|--|
| 042 348 | | O-Ring Repair Kit | |
| 042 258 | | Diaphragm Kit -Buna-N | |
| 042 338 | | Valve Repair Kit | |
| 042 328 | | Dampner Diaphragm | |
| 042 248 | | Pulsation Dampner - 9910-550190 | |
| 042 218 | | Complete Lower Air Chamber | |
| 042 318 | | Right Head Assembly - 9910-620101 | |
| 042 268 | | Rebuild Kit for Control Unit | |
| 022 478 | | Pump w/ Gearbox | |

PUMP REPAIR PARTS - 9.5 GPM DIAPHRAGM PUMP CONTROL UNIT

| | | | |
|---------|--|-------------------------|--|
| 031 408 | | Relief Valve Body | |
| 039 718 | | Control Unit - Complete | |

PUMP REPAIR PARTS - 10 GPM PISTON PUMP

| | | | |
|---------|--|-------------------|--|
| 042 388 | | Rubber Cup Kit | |
| 042 398 | | Valve Repair Kit | |
| 042 408 | | Sleeve Repair Kit | |

UNDERGROUND ACCESSORIES

POLY-LIFT LINE / INFLATION HOSES

Poly-Lift Line With Gauge

| | | | |
|---------|-----|--|--|
| 261 398 | 20' | Poly-Lift Line / Inflation Hose w/ Gauge | |
| 261 408 | 30' | Poly-Lift Line / Inflation Hose w/ Gauge | |
| 261 418 | 40' | Poly-Lift Line / Inflation Hose w/ Gauge | |



| | | | |
|---------|-----------|----------------------------|--|
| 048 468 | 0-160 PSI | Replacement Gauge w/ Cover | |
| 053 458 | 0-160 PSI | Retard Gauge | |

Poly-Lift Line

| | | | |
|---------|-----|---------------------------------|--|
| 261 084 | 20' | Poly-Lift Line / Inflation Hose | |
| 261 106 | 30' | Poly-Lift Line / Inflation Hose | |
| 261 114 | 40' | Poly-Lift Line / Inflation Hose | |

Inflation Hose w/ Safety Relief Valve Gauge (3/4" ID Hose)

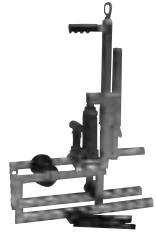
| | | | |
|---------|-----|----------------|--|
| 058 058 | 30' | Inflation Hose | |
|---------|-----|----------------|--|

Category 13 Cherne Underground

13



| Product No. | Size | Description | Ctn. Qty. |
|----------------------------|------|--------------|-----------|
| MANHOLE ACCESSORIES | | | |
| 056 228 | | Manhole Jack | |



| | | | |
|---------|--|---------------------------------|--|
| 056 707 | | Manhole Roller w/ four 5' Poles | |
| 102 601 | | 5 Foot Extension Pole | |

| | | | |
|---------|--|-----------------------------------|--|
| 253 318 | | Winch w/ Counter (500 Foot Cable) | |
|---------|--|-----------------------------------|--|



| | | | |
|---------|-----|----------------------------------|----|
| 015 443 | 24" | Manhole Cover Hook - 90° Handle | 12 |
| 015 438 | 36" | Manhole Cover Hook - 90° Handle | 12 |
| 251 429 | 24" | Manhole Cover Hook - Flat Handle | 12 |
| 251 438 | 36" | Manhole Cover Hook - Flat Handle | 12 |



MULTI-SIZE JET-BALL® CLEANING BALLS

| | | | |
|---------|-----------|----------------------------|--|
| 254 207 | 6" - 10" | Jet-Ball® Pipeline Cleaner | |
| 254 215 | 10" - 14" | Jet-Ball® Pipeline Cleaner | |
| 254 223 | 15" - 18" | Jet-Ball® Pipeline Cleaner | |



REPLACEMENT PARTS - COMPONENTS

| | | | |
|---------|--|---|--|
| 251 607 | | 1/4" Brass Plug | |
| 277 037 | | 1/4" Inflation Fitting | |
| 068 527 | | 1/8" Inflation Fitting | |
| 003 093 | | Quick Disconnect - | |
| | | 1/4" Q.D. (F) x 3/8" Hose Barb | |
| 302 112 | | Quick Disconnect (F) x 1/4" NPT | |
| 026 708 | | Quick Disconnect (F) x 1/2" NPT | |
| 251 623 | | Quick Disconnect 1/4" Q.D. (M) x 1/4" NPT (M) | |
| 042 068 | | Quick Disconnect (M) x 1/2" NPT | |
| 251 666 | | Swivel Ball - 3/8" (F) x 3/8" Hose Barb | |
| 251 615 | | Swivel - 3/8" (M) x 1/4" NPT (M) | |
| 101 478 | | 3/4" NPT (M) x 2" Lug Coupling | |
| 041 610 | | Eyebolt - 3/8" x 16" | |

ABS BY-PASS PLUGS

| | | | |
|---------|--------|-----------------|--|
| 080 624 | 3/4" | Yellow ABS Plug | |
| 078 328 | 1-1/2" | Yellow ABS Plug | |
| 078 042 | 2" | Yellow ABS Plug | |
| 078 751 | 3" | Yellow ABS Plug | |
| 078 859 | 4" | Yellow ABS Plug | |

Category 13 cherne Underground



13